

Daguerreotype Pre-Treatment Condition Report

File No. 2010 - 007

Chris Morry - Family Archive

1/4 plate Daguerreotype of Frederick Clift Morry, ca. 1848

General Description

Housing (Plate Package)
paper and wood embossed case, floral velvet, circa 1848
embossed design undocumented in Berg's reference
elliptic arch top mat, hand bevelled
Image Plate
silver clad copper plate, no visible hallmark



Condition

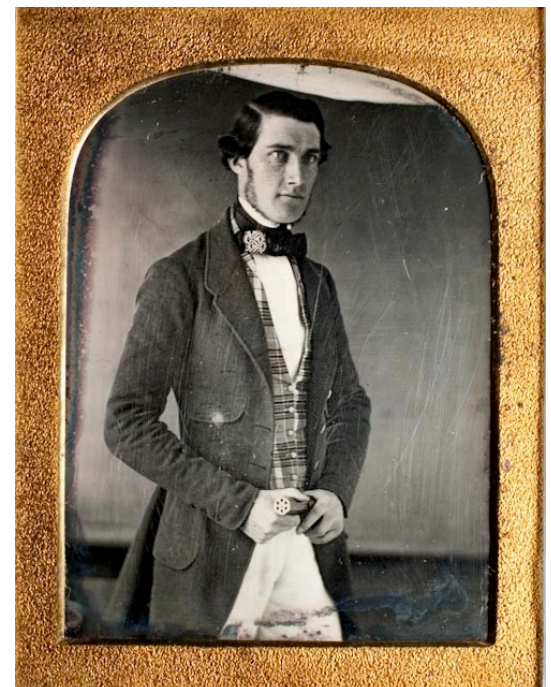
Housing (Plate Package)
case hinge is detached, hinge rails broken
cover glass is unsealed with brass mat adhered incorrectly to outside surface causing the underside of the glass to abrade the image plate
Image Plate (Recto)
Heavy perimeter tarnish
cover glass corrosion film obscuring some of the image
several light scratches due to mishandling
several plate abrasions around perimeter of mat opening caused by unstable components

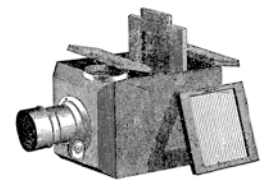
Treatment Recommendations

1. Rebuild the case, reattach broken rails and pinch pad, replace leather hinge
2. Distilled water soak to remove accretions
3. Rinse in ammoniated water to remove white hazy film
4. lightly Electro-clean daguerreotype to retain some perimeter tarnish
5. distilled water, alcohol rinse and dry
6. cut new low-iron Electroverre replacement cover glass
7. re-seal with P90 tape placing the brass mat between the image plate and glass
8. install image package into repaired case

Authorization to Proceed with Treatment
Signed _____ Date _____

Please Note: Daguerreotype Conservation treatments have inherent risks. By signing this document you agree to assume all risks of damage or loss due to the treatment or accident.



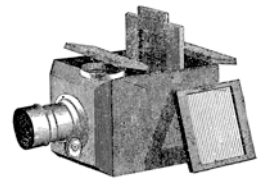


Daguerreotype Pre-Treatment Condition Report

File No. 2010 -007



Image Plate (Recto)							
1	Abrasion	6	Finger Prints	12	Surface Debris	15	Process Artifacts
2	Accretions	7	Indentation / Dent	13	Tarnish		a. Buffing Scratches
3	Corrosion	8	Pitting		a. Brown / Yellow		b. Dust Spots - Black
4	Exfoliation	9	Planar Distortion		b. Grey / Black		c. Dust Spots - White
	a. Blisters / Incipient	10	Residues		c. Blue		d. Gilding Stains
	b.Active		a.Adhesive		d.Tide Line		e. Gilding Specks - black
	c. Losses		b. Binding Tape	14	White Cloudy Film		
5	Fibrous Accretions	11	Scratch / Scratches				



Daguerreotype Post-Treatment Condition Report

File No. 2010 - 007

Condition

Housing (Plate Package and Case)

image resealed with new glass using P90.

case rails detached and re-glued. Masking tape removed and hinge leather replaced, loose leather and paper consolidated with pva adhesive

Image Plate (Recto)

65% of corrosion removed. Perimeter tarnish at edge of mat opening retained

Image Plate (Verso)

File number written in pencil on tape. "M. Robinson 2010-7"

